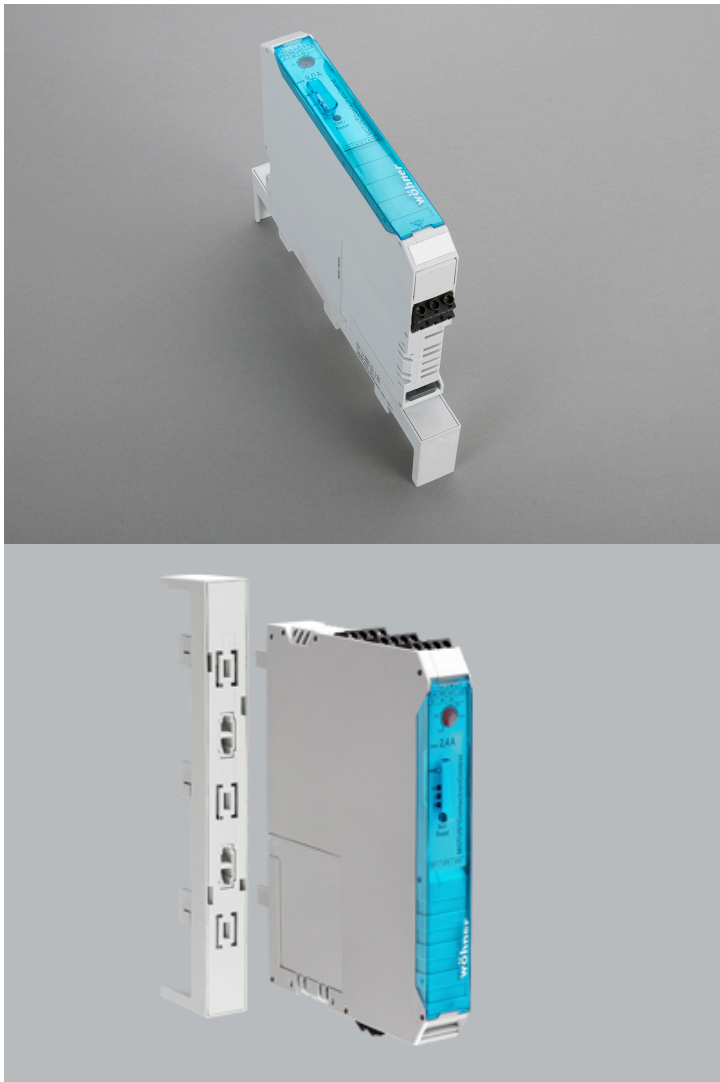


## hybrid motor starter, 3-pole (36105)





The picture may show a similar product.





## Description

Part No.: **36105000B**

MOTUS<sup>®</sup> 60Classic

hybrid motor starter, 3-pole

direct and reversing starter 0.18 - 2.4 A / switch for resistive loads 0.18 - 2.4 A

for busbars 12, 15, 20, 25, 30 x 5, 10 and section busbars

with CrossLink<sup>®</sup>Technology

## System

60Classic

## Advantages of the product

4 functions integrated:

Right contactor

Left contactor

Motor protection relay

EMERGENCY STOP protection up to category 3

Installed width only 22.5mm

30 million electrical switching operations

**Product group** 21

**Subgroup** 09

**pack size** 1

**EAN** 4021267361051

catalog page 2020 : 3.16

ECLASS 6.1 27370804

ECLASS 7.1 27370804

ETIM 4.0 EC001037

ETIM 5.0 EC001037

## Approvals

### Standards

EN 60947-1:2015

EN 60947-4-2:2012

EN 61439-1:2012

EN 50581:2012

EN ISO 13849-1:2015

UL 60947-1

### Approvals

UL , CCC , EAC , Atex



for UL feeder circuits >250V

type number: 36110.1

EAC Type: MCC

UL file: E360470, UL category (for USA): NLDX <http://www.ul.com>

UL file: E360470, UL category (for Canada): NLDX7 <http://www.ul.com>

CCC certificate: 2019010304252617

Type-Examination Certificate: PTB13AT3001

# Technical data

## Details IEC

### Standards

EN 60947-1:2015

EN 60947-4-2:2012

EN 61439-1:2012

EN 50581:2012

EN ISO 13849-1:2015

### Electrical data IEC

Rated current (IEC): 2.4 A

rated voltage (IEC) AC: 500 V

min. operating voltage AC: 42 V

trigger characteristic: Class 10A

set nominal current: Yes

min. load current: 0.18 A

max. switching frequency: 2 Hz

switching cycles: 30.000.000

safety level: SIL3

reply contact: 1 CO

rated frequency (IEC): 50 / 60 Hz

rated isolation voltage  $U_i$  AC: 500 V

rated surge voltage  $U_{imp}$ : 6 kV

power dissipation of the article:

The power dissipation at a typical load of 80 % results to 3.5 W.

(The power dissipation at full load would be 5.5 W.)

## Details UL

### Standards

UL 60947-1

for UL feeder circuits >250V

### Electrical data UL

rated current (UL): 2 A  
rated voltage (UL) AC: 500 V  
min. operating voltage AC: 42 V  
rated frequency (UL): 50 / 60 Hz

SCCR unprotected max.: 5 kA  
3 cycles (without OPD) @ 600 V AC  
SCCR protected max.: 100 kA

SCCR: 100 kA with JDDZ fuse Class J 400 A / 600 V AC

### Mechanical data

W x H x D: 22.5 x 200 x 156  
weight: 56.5 kg/100  
poles: 3-pole  
for busbars: 12, 15, 20, 25, 30 x 5, 10 and section busbars

degree of protection: IP20

vertical installation position: Yes  
horizontal installation position: No

permitted degree of pollution: 2

## Terminal points

screw clamp connection

screw drive:	0,8x4
wire stripping:	8 mm
min. cross-section:	0.2 mm <sup>2</sup>
max. cross-section:	2.5 mm <sup>2</sup>
Md min.:	0.5 Nm
Md max.:	0.6 Nm

min. cross-section UL: AWG 24

max. cross-section UL: AWG14

torque (UL): 4,4 - 5,3 lb-in

Screw terminals (solid round, flexible, flexible with wire-end ferrule)

0.14 - 2.5mm<sup>2</sup> / 0.5 - 0.6Nm

The cable outlet is provided with a pluggable terminal

## Accessories



### **31567000**

replacement fuse for MOTUS®  
fuse 16 A for version 0.6 A and 2.4 A  
10x38 gR



### **36114000B**

EQUES® 60Classic  
spare part busbar adapter 25 A  
busbar adapter base