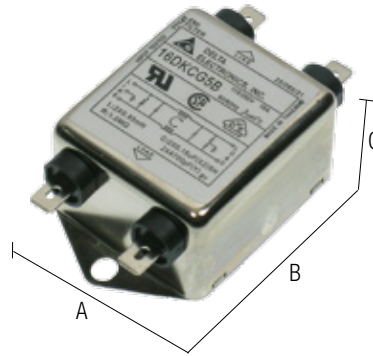


DK series single-cell single-phase filter

- Models from 3 to 30 A
- Elevated attenuation from 150 kHz to 30 MHz
- Elevated attenuation even on long cables
- Minimum surface occupied on the panel

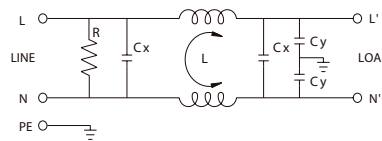


NOTES

The dimensions and diagrams are purely indicative, for more detailed information see the product's technical data.

- (1) 0.25 mA @ 115 Vac and 0.45 mA @ 250 Vac for 3...20 A - 1 mA @ 115 Vac models and 2 mA @ 250 Vac for 30 A models.
- (2) Version made to order (not kept in stock); contact our sales office for availability.
- (3) Flat plug for 3...20 A models; self-blocking nut for 30 A model.
- (4) The presence of condensators between phase and neutral, dictates that the isolation tests are carried out in DC in accordance with EN60950.

BLOCK DIAGRAM



VERSIONS		
Nominal current	ID number	Code
3 A	F 03 DK BG5B	XF03DKBG5B (2)
6 A	F 06 DK BG5B	XF06DKBG5B (2)
12 A	F 12 DK BG5B	XF12DKBG5B (2)
16 A	F 16 DK CG5B	XF16DKCG5B (2)
20 A	F 20 DK CG5B	XF20DKCG5B (2)
30 A	F 30 DK CS5B	XF30DKCS5B (2)

Dimensions			Weight (kg)
A	B	C	
64.5	34	30	
64.5	34	30	
64.5	34	30	
45.5	71.5	30	
51.8	84.8	30	
56.5	114	46.4	

GENERAL TECHNICAL DATA	
Nominal voltage	115–250 Vac ± 10%
Nominal current	See table for versions
Frequency	50...60 Hz
Leakage current at 480 Vac 60 Hz	0.25...1 mA / 0.45...2 mA (1)
Room temperature	-25...+85°C
Line/line insulation	1.45 KVdc / 60 s (4)
Line/PE insulation	2.25 KVdc / 60 s (4)
Surge category / degree of pollution	—
Degree of protection	IP 20 IEC 529, EN60529
Connection type	flat plug (from 3 to 20 A) / self-blocking nut (30 A) (3)
Container material	metallic
Approximate weight	See table for versions
Assembly	on panels by means of anchorage screws

ID number	Attenuation in dB of common mode (L / PE)						Attenuation in dB of differential mode (L / L)					
	0.15 MHz	0.5 MHz	1 MHz	5 MHz	10 MHz	30 MHz	0.15 MHz	0.5 MHz	1 MHz	5 MHz	10 MHz	30 MHz
F 03 DK BG5B	20	30	35	45	50	45	7	35	50	45	45	45
F 06 DK BG5B	15	20	25	40	45	45	10	20	45	45	50	45
F 12 DK BG5B	10	20	22	35	45	40	10	20	40	45	45	45
F 16 DK CG5B	10	18	20	35	45	30	10	18	40	40	40	35
F 20 DK CG5B	10	18	20	30	35	35	10	12	35	35	40	40
F 30 DK CS5B	10	25	30	45	50	35	12	40	50	50	50	45